

# A CHRISTMAS CONCERT



for The Newbury and  
District Cancer Care  
Trust and Macmillan  
Cancer Support

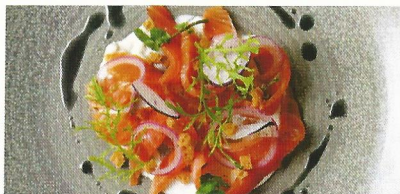
Saturday  
2<sup>nd</sup> December 2017 6PM  
St Nicolas Church, Newbury

# THE WOODSPEEN

---

Lambourn Road, Woodspeen  
Newbury, RG20 8BN

01635 265070 to book a table



## **THE NEWBURY AND DISTRICT CANCER CARE TRUST**

A very warm welcome to all of our supporters to this, our 16th Christmas concert, organised jointly with Macmillan Cancer Support. Without your loyal support over the past many years we would have had considerable difficulty maintaining the level of service that we provide to cancer patients in Best Berkshire.

All of our services are focused upon patients within our local community and we continue to provide an efficient volunteer transport network carrying patients to hospitals wider afield for treatment. Over the past year our drivers made close to 1000 such journeys.

In addition to our transport service the Trust continues to provide financial grants for patients experiencing hardship as a consequence of their illness, we provide specialist equipment such as stair lifts to facilitate treatment at home. We fund complimentary therapies and continue to provide financial support to the day unit at the West Berks community hospital, the four Rainbow Rooms, and we fund the complimentary therapist.

Patient facilities for cancer treatment are very limited in West Berkshire and in most cases patients are obliged to travel to Reading. In addition, the day unit is both cramped and lacking in the resources expected by both staff and patients. Our project to build and equip a new, state-of-the-art cancer care unit at the local hospital is well advanced – the building was completed some weeks ago and is currently undergoing the fit-out. We anticipate that the new Rosemary Centre will be ready for its first patients in spring.

At a cost of £4.5 million fund raising for the new unit has been a major project that would not have succeeded without the quite amazing support and generosity of the local community – thank you. None of us can know if or when we may be diagnosed with cancer, but in the event of that unfortunate day, patients can be confident of support from the Newbury & District Cancer Care Trust.

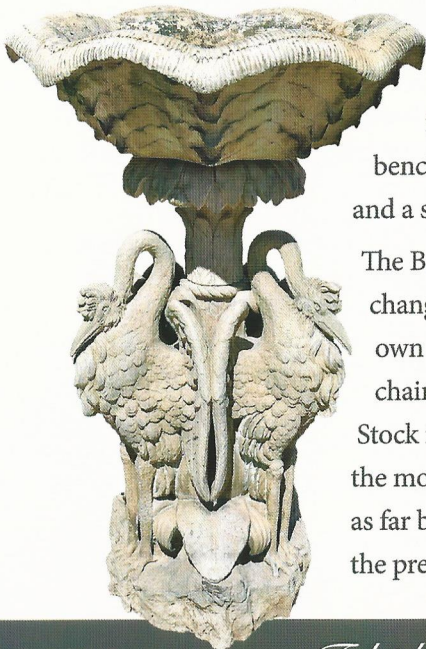
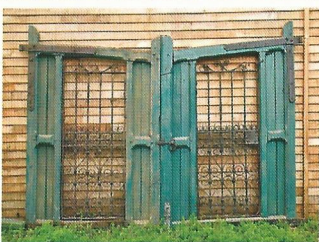
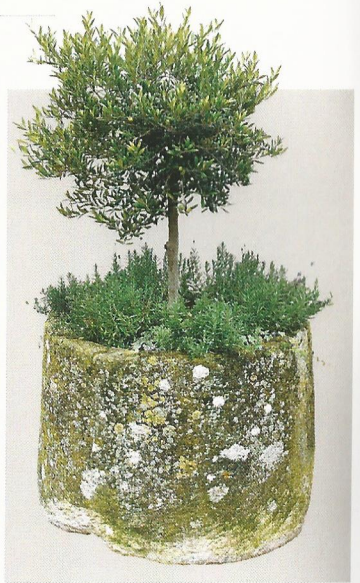
We wish you all a happy and healthy Christmas and New Year.

**David J Ball JP**

**Chairman – Newbury and District Cancer Care Trust**



# GARDEN ART +



**Garden Art Plus Ltd** specialises in sourcing and supplying garden antiques and contemporary garden furniture and structures, including garden urns, statues, benches, tables, sundials, birdbaths, fountains, stone troughs and a selection of antique staddle stones.

The Barrs Yard site in Hungerford, Berkshire is an ever-changing display of garden and home items including our own specially designed range of tables, benches, chairs, planters, pergolas and bespoke garden structures. Stock is updated on a regular basis and is one of the most comprehensive in the UK, dating from as far back as the seventeenth century up to the present day.



*Telephone: 01488 686811*

E: [sales@gardenartplus.com](mailto:sales@gardenartplus.com) · [www.gardenartplus.com](http://www.gardenartplus.com)

## **MACMILLAN CANCER SUPPORT**

Thank you for joining us for our Christmas Concert and for your continued support to both charities during the past year.

2016 was a phenomenal year, but there are many more people who need our help. The number of people living with cancer is rising each year. In the next 12 months, around 360,000 people will be hit with a cancer diagnosis. Last year over 9 million people accessed our services. 4.1 million used online services and 3.4 million used our information materials. Over 1.5 million people received help in person or over the phone.

We help people to make the choices they need to take back control, so they can start to feel like themselves again, our Elderly Care Service in West Berkshire supporting elderly people first diagnosed with cancer and living alone continues to be very successful. – also our rehabilitation group at Northcroft Leisure Centre enabling people to meet others and begin to recover their fitness. The Royal Berkshire Hospital has a Macmillan Advisor in the Cancer Centre providing professional assistance with all aspects of cancer, financial, emotional and caring.

There is always up to date information at The Patient Information Point at the West Berkshire Community Hospital Thatcham – Macmillan provides a very varied and comprehensive information pack. With these back up facilities no one should feel without support. We also continue to help people through tried and tested Macmillan Services, including giving out £9.9. million in Macmillan grants to 33,000 people.

All of our work is only possible thanks to our supporters – you. We are so grateful for everything you do whether it is holding coffee mornings, volunteering or supporting our events. Without you we would not be here.

We are here for you too, so if you ever have any questions, you can call us free 0808 808 00 00 or visit [macmillan.org.uk](http://macmillan.org.uk) Enjoy your evening

**Erica Tipton**  
**Chairman Macmillan Cancer Support Newbury Committee**



**DONNINGTON**

---

NEW HOMES

Donnington New Homes  
are pleased to sponsor  
The Newbury Christmas  
Concert for Cancer  
Charities and would like to  
wish all our customers and  
partners a Merry Christmas

---

E [info@donningtongroup.com](mailto:info@donningtongroup.com) W [www.donningtongroup.com](http://www.donningtongroup.com)

T 01635 550027



**CHOIR  
AND  
MUSICIANS**

—

## **NEWBURY CHORAL SOCIETY**

Newbury Choral Society is a non-auditioned choir with a history of over 130 years of bringing a high standard of music to the area. The establishment of a permanent group of singers must have met an urgent need in the town as the Society attracted more than one hundred members for the first concert in 1885. Conducted by the choirmaster and organist of Newbury's St Nicolas Church, John Shepherd Liddle, the choir made a good impression on the Newbury Weekly News critic who wrote that 'the execution of the choruses reflected great credit upon the members of the Society and their conductor'.

Since that first concert we have continued to perform a wide and varied repertoire, from the great choral works of Bach, Handel and Vaughan Williams to pieces by more recent composers Tavener, Britten and Karl Jenkins. In its second century the choir's conductors have included Jonathan Finney, Robert Barsby, Leo Hussain and its first female Musical Director Janet Lincé. Cathal Garvey has held the position since December 2009.

You can find out more about Newbury Choral Society, its history and forthcoming events, at [www.newburychoral.org.uk](http://www.newburychoral.org.uk).

If you are interested in joining us, please contact our secretary through the website. We rehearse on Monday evenings at the Methodist Church Hall, Newbury, from 7.20pm to 9.40pm. We ask that you are able to read music but not necessarily to sight-read. You will receive a warm welcome.

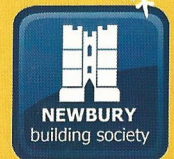
With love from  
the Bank of  
Mum and Dad

A gifted deposit...

...is the greatest gift of all.

Help a loved one step onto the property ladder  
this Christmas.

**YOUR MORTGAGE IS SECURED ON YOUR HOME. THINK CAREFULLY BEFORE  
SECURING OTHER DEBTS AGAINST YOUR HOME. YOUR HOME MAY BE  
REPOSSESSED IF YOU DO NOT KEEP UP REPAYMENTS ON YOUR MORTGAGE.**



Call: **01635 555777** | Visit: **newbury.co.uk**

Newbury Building Society is authorised by the Prudential Regulation Authority and regulated by the Financial Conduct Authority and the Prudential Regulation Authority (Financial Services Register number 206077). 6816

## **CATHAL GARVEY - MUSICAL DIRECTOR**

Since moving from his native Ireland to London in 2009, Cathal Garvey has conducted Southern Sinfonia, London International Orchestra, Covent Garden Chamber Orchestra, I Maestri, London Repertoire Orchestra, London Medical Orchestra, King's College London Symphony Orchestra and Morley College Choir. He was Chorus Master and Assistant Conductor for two seasons at Grange Park Opera. He is currently on the conducting staff of the Royal Academy of Music.

Cathal is conductor and Artistic Director of the London-based Ulysses Symphony Orchestra, which he founded in 2015. More recently, he took its professional sister-orchestra, the London Ulysses Orchestra, on a six-city tour of China at the end of 2016, which included a performance at the Great Hall of the People in Beijing. Cathal was appointed Musical Director of Newbury Choral Society in 2009. Since 2015 he has been Musical Director of Billingshurst Choral Society.

Cathal began violin and piano studies in Cork at an early age, continuing at the Cork School of Music and later reading music at University College Cork. After completing his Masters Degree in Conducting, he studied for two years at the prestigious College of Moscow Conservatory. Cathal began his career as an Opera Chorus Master working for most of Ireland's major opera companies including Opera Ireland, Opera Theatre Company, Anna Livia Opera Festival, Opera South and Lyric Opera. He worked on over fifty productions with these companies and acted as Assistant Conductor for many of them.

During his ten years in Dublin, Cathal conducted many orchestras including the National Symphony Orchestra of Ireland, the RTÉ Concert Orchestra and the Dublin Baroque Players, and from 2001 to 2006 was Principal Conductor of the Dublin Orchestral Players. From 2004 to 2009 he was Musical Director of the Dun Laoghaire Choral Society.

## STEVE BOWEY - ACCOMPANIST

Steve studied organ and piano from an early age, playing the organ regularly at St Francis and St Andrews churches in Coulsdon. After studying Engineering at Salford University he moved to Newbury to work for Vodafone. In 1991 Steve was appointed as accompanist of the Cromwell Singers and became their musical director in 1993. From 1992, he was Director of Music at St Mary's Church, Shaw-cum-Donnington, and regularly accompanies for local choirs, including the Douai Choral Society, the Downland Chorale, the RSCM Southern Cathedral Singers, Berkshire Maestros youth choirs, Worcester College Oxford and Newbury Choral society.

In June 1995 an opportunity at work took Steve to live in Holland. On returning to Newbury in 1997 he returned to St Mary's Shaw-cum-Donnington as organist. He is a regular performer in the Newbury and District Organists' Association lunchtime recital series and has also given recitals in Thaxted, Caterham and Manchester and Farnham. In 2001 he was appointed Musical Director of the Sandham Singers. In 2006 Steve joined the Royal College of Organists, and in July the following year took the examination for Associate (ARCO) in which he was awarded the Limpus prize for performance, as well as the Sowerbutts and Samuel Baker prizes. After further study, he was awarded the Fellowship diploma (FRCO) in January 2011.



Charles Lucas and Marshall are pleased to support the 16th Christmas Concert for cancer charities and would like to wish everyone a

**MERRY CHRISTMAS  
& HAPPY NEW YEAR**

01635 521212  
info@coffinmew.co.uk  
www.coffinmew.co.uk

  
Charles Lucas  
& Marshall  
Part of Coffin Mew Solicitors

## **JUSTIN BROWN**

Justin began singing at an early age and, together with his father and two elder brothers, sang as a chorister in Truro Cathedral, Cornwall. He went on to study and take up a professional career as a tenor under John Wakefield at Trinity College of Music. Opera roles have included Beppe (Pagliacci) for Duchy Opera, Dr Blind (Die Fledermaus) for London City Opera, chorus at Opera Holland Park, Crystal Clear Opera and London City Opera, including tours to the USA and France. He has performed solo oratorio for numerous choral societies, including Hammersmith and Fulham. He is a member of Billingshurst Choral Society and is delighted to be singing with Newbury Choral Society tonight, further strengthening the ties between the two.

## **ISABEL IRVINE YOUNG MUSICIAN**

Isabel lives in Reading, she is 18 and completed her A Levels at Kendrick School this summer. She was a pupil at Junior Guildhall in London for the three years to July 2017, and won the Rotary Club National Young Musician (Vocal) competition in 2016. She has been a member of Berkshire Youth Choir, enjoying tours of Germany and China and also sings with her local church choir and with National Youth Choir of Great Britain (Training Choir). Isabel is currently studying singing with Rachel Sherry, preparing for conservatoire auditions in November and December before heading off for a few months of gap year travel early next year. She is delighted to have been invited to participate in tonight's concert.

# PRESENTERS

—

# Countryside Books

Publishers of local interest books covering history, walking and cycling, wish The Newbury & District Cancer Care Trust and Macmillan Cancer Support best wishes for a successful evening.



# CASTLE WINDOWS



**TEL: 01189 711960**

**WINDOWS • DOORS  
CONSERVATORIES  
FASCIA • SOFFITS • GUTTERS  
FREE Quotations  
Competitive Prices  
FENSA Registered**

**UP TO 30% DISCOUNT**

**[sales@castlewindowsnewbury.co.uk](mailto:sales@castlewindowsnewbury.co.uk)  
[www.castlewindowsnewbury.co.uk](http://www.castlewindowsnewbury.co.uk)**

... the piano specialists



Large selection of:

upright pianos | grand pianos

new | used | restored

Grotrian-Steinweg specialist at  
Official Bluthner piano centre at  
Kawai piano selection centre at

Sales | Tuning  
| transportation | restoration



**BEN WHEELER**  
**Pianos**

01256 477198  
[www.benwheelerpianos.co.uk](http://www.benwheelerpianos.co.uk)



Martin & the Magpie

- FLORAL DESIGN -

120 High Street - Hungerford- Berkshire- RG17 0LU  
01488 681062

[www.martinandthemagpie.co.uk](http://www.martinandthemagpie.co.uk)

Find us on: [Facebook](#) - [Twitter](#) - [Instagram](#) - [Pinterest](#)



## **ROBERT ASTOR**

Robert Astor was born in 1958 and grew up in Berkshire. He read modern languages at King's College, London University and then worked in export and publishing. He is a partner with his brother in a family dairy business. They own two farms near Newbury and supply milk to Marks & Spencer. Robert is Chair of the Essex Wynter Charity which houses retired nurses in Newbury. He is also Chair of the Astor Foundation, which is a grant giving charity supporting medical and other causes, and in that respect has got to know the work of Macmillan Cancer Support.

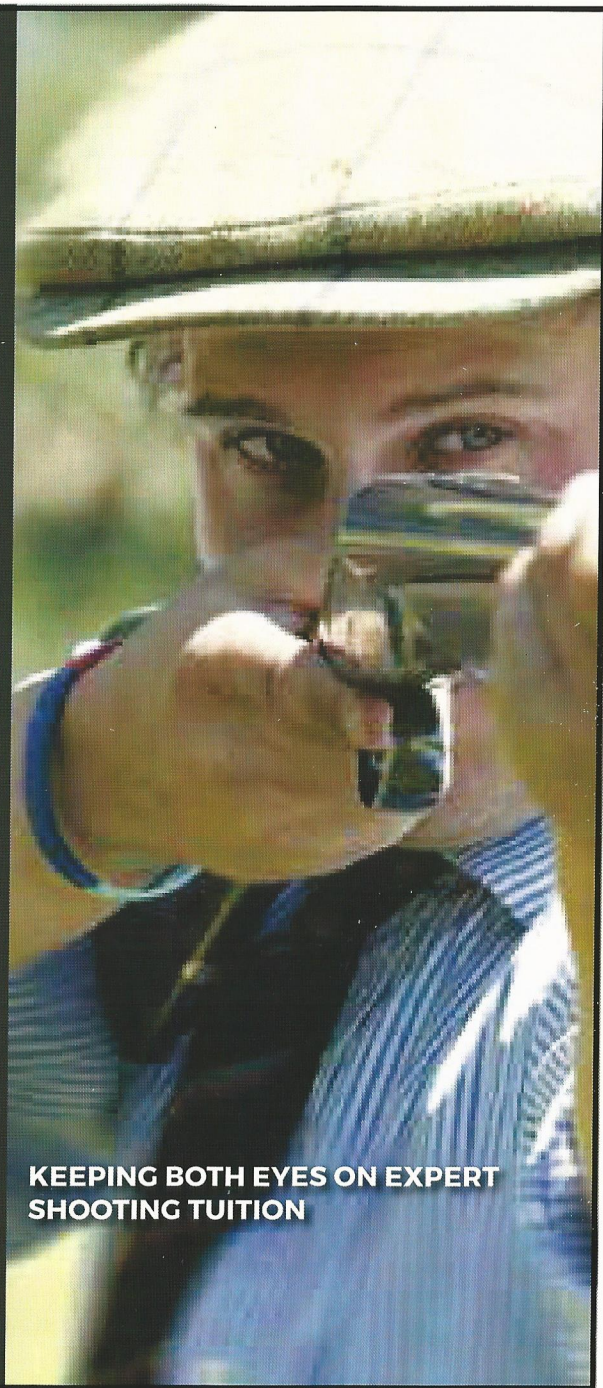
In 2016 he was President of the Royal County of Berkshire Show, and was subsequently made a Vice President of the League of Friends of the Royal Berks Hospital.

## **FATHER PADRAIG FAUGHNAN**

I am a native of Reading and trained for the Catholic Priesthood in All Hallows College, Dublin. I have been a priest for 41 years and have served in 6 parishes in Portsmouth Diocese, which includes Berkshire, Hampshire, the Isle of Wight, Jersey, Guernsey and Alderney. I have enjoyed my time as a priest, as the work of the Lord includes a variety of tasks that I have to minister to. No day or call is ever the same. One of my most important ministries include being the Catholic Chaplain to West Berkshire Community Hospital.

*Pennsport Shooting School*

[www.pennsport.co.uk](http://www.pennsport.co.uk) | 01635 247635



**KEEPING BOTH EYES ON EXPERT  
SHOOTING TUITION**

## **PROFESSOR SIR JOHN CUNNINGHAM KCVO FRCP**

Professor Sir John Cunningham's early training was at Cambridge University and Oxford University, with postgraduate training in The University of London and Washington University School of Medicine, St. Louis, USA.

He was Head of the Medical Household to Queen Elizabeth II from 2005-2014, and also occupied the position of Physician to the Queen. On stepping down, he was knighted by Queen Elizabeth II as a KCVO. He is currently Professor of Nephrology at UCL Medical School, London; Consultant Nephrologist at the Royal Free Hospital, London, and The London Clinic; and Physician, King Edward VII Hospital, London.

Professor Cunningham has published in excess of 100 peer reviewed articles as well as numerous invited reviews and book chapters.

He has been a Special Trustee to The London Hospital and to The Barts and London Charitable Foundation and was an ex officio member of the board of Barts and The London NHS Trust. He is currently a trustee of The St Peter's Trust and also of The Astor Foundation. In 2014 he was made an Honorary Fellow of Trinity Hall, Cambridge.

In 2009, Professor Sir John Cunningham was appointed to the Cytochroma (now Opko Health) Scientific Advisory Board. He has been an advisor to various other pharma companies including Amgen Inc, Shire, Frezenius Medical Care, Leo Pharma, Astra Zeneca and Pfizer.

## SNOWDROPS

OPEN 2018

31st January to 4th March  
Wednesday to Sunday

Specialist Plant Fair  
Wednesday 28th February  
& Thursday 1st March  
In aid of

Macmillan Cancer Support

Online **Christmas** Shop

[www.welfordpark.co.uk](http://www.welfordpark.co.uk)

WELFORD PARK  
Nr Newbury RG20 8HU



Dickins  
Hopgood  
Chidley  
SOLICITORS

Take a closer look...

The Old School House,  
42 High Street, Hungerford,  
Berkshire RG17 0NF

T 01488 683555 E [dhc@dhc-solicitors.co.uk](mailto:dhc@dhc-solicitors.co.uk)



NEED to hire  
WALK-IN freezers  
or CHILLERS?

ICEcool  
trailers

Tel: 01635 250950 • Fax: 01635 250930  
Email: [hire@icecooltrailers.co.uk](mailto:hire@icecooltrailers.co.uk)  
Web: [www.icecooltrailers.co.uk](http://www.icecooltrailers.co.uk)

## St Gabriel's

Your Route to Success

Independent Day School  
Boys 6 months–11 years & Girls 6 months–18 years



Our very best wishes for a successful  
evening from us all at St Gabriel's

01635 555680  
[www.stgabriels.co.uk](http://www.stgabriels.co.uk)

*Committed to the highest level of customer service*

# H&W

INDEPENDENT ESTATE AGENTS

01635 522044

[www.hillierandwilson.co.uk](http://www.hillierandwilson.co.uk)

# Fifi & Moose

Welcome Autumn with the arrival of the stylish  
ARCHE FOAL WAZED GHA COATS  
made in England, available in Brown and Black

01635 569400

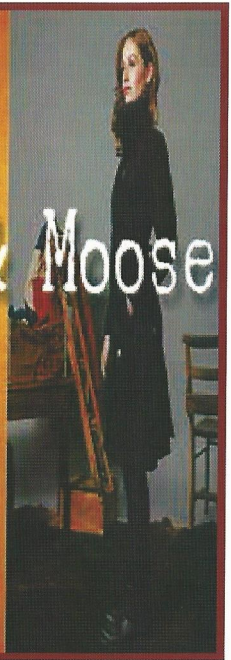
9 Weavers Walk, Newbury RG14 1AL

[www.fifiandmoose.co.uk](http://www.fifiandmoose.co.uk)

Monday to Friday: 9.30am to 5.30pm

Saturday: 9.30am to 1pm

Open Sunday throughout December only



## ADAM KOTZ

Adam's acting career has taken him all over the world in film, TV, theatre and radio. Films include the Oscar-winning *THE LAST KING OF SCOTLAND* and Peter Greenaway's *NIGHTWATCHING*. His many TV roles include *FATHER BROWN*, *THE A WORD*, *THE HOLLOW CROWN*, *THE PROMISE*, *FIVE DAUGHTERS*, *SILENT WITNESS*, *MOSES JONES*, *MIDSOMER MURDERS*, *TORN*, *BODY FARM*, *BAND OF GOLD* and *SURVIVORS*.

Theatre work includes several years at the National Theatre and time with the RSC and Cheek By Jowl. He has been seen locally at the Watermill Theatre as Dr. Watson in *SHERLOCK'S LAST CASE*, and Sir William Collyer in *THE DEEP BLUE SEA*. He played Pastor Manders in Richard Eyre's Olivier award-winning revival of *GHOSTS* at the Trafalgar Studios, London.

He lives in Newbury with his wife Helen Franklin and 3 children. Offstage, he is the Chair of the charity ACE Space Newbury, the volunteer-run Arts and Community space, records books for Living Paintings and teaches and plays guitar, mandolin and banjo.

## **PROFESSOR SUZANNA ROSE PHD, MA, RN**

Suzanna originally trained as a nurse and health visitor and undertook her psychotherapeutic training at the University of Reading in the early 1990s. She then went on to become a founder staff member of the Traumatic Stress Service at the Institute of Psychiatry/Maudsley Hospital London. She also took her doctorate at the University of London in 1999. Subsequently she went on to lead the Berkshire NHS Traumatic Stress Service from 1999 to 2007. Alongside this she has been a member of the British Red Cross since the age of eleven and is currently President, British Red Cross, Berkshire Branch. In that capacity she has worked at disasters both in the UK and overseas from 1988 to 2006.

- Visiting Professor, School of Psychology and Clinical Language Sciences, University of Reading
- BACP Accredited Psychotherapist and Counsellor (awarded BACP Fellowship, August 2001)
- Member British Association of Behavioural and Cognitive Psychotherapy
- EMDR Levels I and II
- Registered General Nurse

As a clinician and academic she has published extensively and spoken at conferences all over the world.

**CONCERT  
RUNNING ORDER**



**CHOIR AND AUDIENCE:**    *Once in Royal David's City*

- Solo:**            Once in royal David's city  
                      Stood a lowly cattle shed,  
                      Where a mother laid her baby  
                      In a manger for His bed:  
                      Mary was that mother mild,  
                      Jesus Christ her little Child.
- Choir:**            He came down to earth from heaven,  
                      Who is God and Lord of all;  
                      And His shelter was a stable,  
                      And His cradle was a stall;  
                      With the poor, and mean, and lowly  
                      Lived on earth our Saviour holy.
- All:**                And through all his wondrous childhood  
                      He would honour and obey,  
                      Love and watch the lowly maiden,  
                      In whose gentle arms he lay:  
                      Christian children all must be  
                      Mild, obedient, good as he.
- All:**                And our eyes at last shall see him,  
                      Through his own redeeming love,  
                      For that child so dear and gentle  
                      Is our Lord in heaven above;  
                      And he leads his children on  
                      To the place where he is gone.
- All:**                Not in that poor lowly stable,  
                      With the oxen standing by,  
                      We shall see him; but in heaven,  
                      Set at God's right hand on high;  
                      Where like stars His children crowned  
                      All in white shall wait around.

*Words: C.F. Alexander*

*Music: H.J. Gauntlett (arranged by A.H. Mann)*

- INTRODUCTION:** Robert Astor
- CHOIR:** John Rutter - *Jesus Child*
- READING:** Prof Sir John Cunningham KCVO, FRCP  
*Abridged (lightly) from Lucy Winkett,  
Rector of St James' Church, Piccadilly.*
- ISABEL IRVINE,  
YOUNG MUSICIAN:** Elizabeth Poston -  
*Jesus Christ the Apple Tree*
- CHOIR AND AUDIENCE:** *Away in a Manger*

Away in a manger, no crib for a bed,  
The little Lord Jesus laid down his sweet head.  
The stars in the bright sky looked down where he lay,  
The little Lord Jesus asleep on the hay.

The cattle are lowing, the baby awakes,  
But little Lord Jesus no crying he makes.  
I love thee Lord Jesus! Look down from the sky,  
And stay by my side until morning is nigh.

Be near me Lord Jesus; I ask thee to stay  
Close by me for ever, and love me, I pray.  
Bless all the dear children in your tender care,  
And fit us for heaven, to live with thee there.

*W.J. Kirkpatrick (arranged by David Willcocks)*

- CHOIR:** John Tavener -  
*God is with us (soloist: Justin Brown)*
- READING:** Prof Suzanna Rose PhD, MA, RN  
*from City of Bells by Elizabeth Goudge*

**CHOIR:**

*Vaughan Williams - Fantasia on  
Christmas Carols (soloist: Justin Brown)*

**CHOIR AND AUDIENCE:**

*O Come, All Ye Faithful*

O come, all ye faithful, Joyful and triumphant,  
O come ye, O come ye to Bethlehem;  
Come and behold him, Born the King of Angels:  
O come, let us adore Him, (3×)  
Christ the Lord.

God of God, Light of Light,  
Lo! he abhors not the Virgin's womb;  
Very God, begotten, not created:  
O come, let us adore Him, (3×)  
Christ the Lord.

Sing, choirs of angels, Sing in exultation,  
Sing, all ye citizens of heav'n above;  
Glory to God, In the highest:  
O come, let us adore Him, (3×)  
Christ the Lord.

Yea, Lord, we greet thee, Born this happy morning,  
Jesu, to thee be glory giv'n;  
Word of the Father, Now in flesh appearing:  
O come, let us adore Him, (3×)  
Christ the Lord.

*Words: T.F. Oakley, W.T. Brooke*

*Music: Anonymous (arranged by David Willcocks)*

---

**15 MINUTES INTERVAL**

**CHOIR AND AUDIENCE:**    *The First Nowell*

The first Nowell the angel did say  
Was to certain poor shepherds in fields as they lay;  
In fields where they lay, keeping their sheep,  
On a cold winter's night that was so deep:

*Chorus:*  
*Nowell, Nowell, Nowell, Nowell.*  
*Born is the King of Israel.*

They looked up and saw a star,  
Shining in the east, beyond them far;  
And to the earth it gave great light,  
And so it continued both day and night

*Chorus*

And by the light of that same star,  
Three wise men came from country far;  
To seek for a king was their intent,  
And to follow the star wherever it went.

*Chorus*

Then let us all with one accord  
Sing praises to our heav'nly Lord,  
That hath made heav'n and earth of naught,  
And with his blood mankind hath bought

*Chorus*

*Traditional (arranged by David Willcocks)*

**CHOIR:**                                 *John Rutter – Dormi, Jesu*  
  *John Tavener – Today the virgin*

**READING:**                             *Adam Kotz – selections from*  
  *Gervais Phinn's experiences*

**CHOIR:**                                 *John Tavener – A Christmas Round*  
  *Morten Lauridsen – O magnum mysterium*



**Andrew Lloyd Webber  
Foundation**

---

**THE ANDREW LLOYD WEBBER FOUNDATION IS DELIGHTED TO SUPPORT THE 2017  
NEWBURY MACMILLAN CHRISTMAS CONCERT AND WELCOMES THE INVOLVEMENT  
OF LOCAL YOUNG MUSICIANS AT ST NICHOLAS CHURCH TONIGHT**

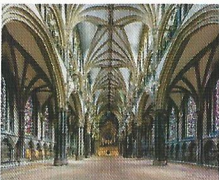
---

The Andrew Lloyd Webber Foundation was set up by Lord Lloyd Webber in 1992 to promote the arts, culture and heritage for the public benefit. In 2010, the Foundation embarked on an active grant-giving programme and has now awarded grants of £17.5m to support high-quality training and personal development as well as other projects that make a real difference to enrich the quality of life both for individuals and within local communities.

In 2017, the Foundation's new grants have included music projects at the Montgomery Holloway Music Trust, English Schools Orchestra and Hackney New Primary School and has encouraged the training and enhancement of heritage skills in young people by way of a grant to Lincoln Cathedral's Heritage Skills. The Foundation provides 30 musical theatre scholarships annually at renowned schools and colleges across the UK and continues to fund the Music in Secondary Schools Trust where over 5500 pupils in 11 schools have benefitted from the programme.

To find out more about grants awarded and how to apply for funding,  
please visit our website: [www.andrewlloydwebberfoundation.com](http://www.andrewlloydwebberfoundation.com)

*"I am thrilled my Foundation is helping to nurture the talent of the future by bringing the empowering force of music and the arts to a new generation" – Andrew Lloyd Webber*

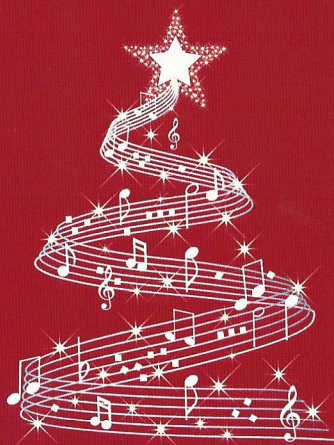


**The Audience is kindly asked to remain  
in place until after the departure of the  
Readers and Distinguished Guests**

---

**THERE WILL BE A  
RETIRING COLLECTION**

**for Newbury and District Cancer Care Trust  
and Macmillan Cancer Support.**



# THANK YOU

The Organising Group wish to thank all those who have given of their time and talents to support these great charities at this Concert.

## OUR GENEROUS FINANCIAL SUPPORTERS

Each year financial support is sought to cover the costs of the concert including the fee to the choir, the payment to the Performing Rights Society, the hire of the Church and Hall, printing and promotional costs. These costs amount to over £3,000.

## CHARITABLE TRUSTS

The Colefax Charitable Trust  
The Englefield Charitable Trust  
The Iliffe Family Charitable Trust  
The Stevenson Family's Charitable Trust

## THE BUSINESS COMMUNITY

BaxterStorey for the sponsorship of the reception  
eShare  
Sovereign Housing Association  
and all of our advertisers

## SPECIAL SUPPORTERS

Mr and Mrs J Baxter  
Mrs Mary Cameron  
Mr and Mrs D Gardiner  
Mr and Mrs N Garland  
Mr and Mrs S Lindley  
Lady Eliza Mays-Smith  
Mr and Mrs H Marriage  
Mr and Mrs J Puxley  
Mr and Mrs A Storey  
Sir Philip and Lady Wroughton

**THEIR GENEROUS SUPPORT  
IS GREATLY APPRECIATED.**

# FURR & CO.



*Enchanting English handmade jewellery*

GOLDSMITHS JEWELLERS DESIGNERS  
7 BRIDGE STREET HUNGERFORD 01488 686226  
[www.furrandco.co.uk](http://www.furrandco.co.uk)

